



PRODUCT LINE OVERVIEW

Integra enclosures are offered in four basic product lines: the Premium Line, the Impact Line, the JIC Line, and the Telecom Line. We also have added a Junction Box Line. All enclosures are injection-molded, engineered thermoplastics, designed to provide the best combinations of strength, durability, design features, and aesthetics.

The Premium Line, JIC Line, and Telecom Line all share the following features:

- **Warp-Resistant Covers**

All Integra covers are molded with a slight doming in the covers. This works to ensure that the cover remains flat at the sealing surface, eliminating a chronic problem found in other non-metallic enclosures.

- **Clear Covers**

Each of the Integra product lines offers enclosures with crystal clear covers. Clear covers provide a superior alternative to traditional window kits, as well as provide more design flexibility and product differentiation opportunity.

- **EZ Hinge**

Integra hinged covers are 100% non-metallic, strong and durable, and easy to remove and replace. All hinged covers provide a full 225 degree door swing, providing full access to the inside of the enclosure.

- **Unique Panel Suspension Capability**

Integra has developed and patented (Patent No. 6,604,798) a unique panel suspension feature. This system allows the placement of subpanels at any height within the enclosure, as well as the stacking of panels. It also works well to support the installation of dead front panels. This system is easy to install and very sturdy.

- **Molded-In Mounting Bosses**

All Integra enclosures feature multiple molded-in mounting bosses designed to accept #10 self-tapping screws for the installation of DIN rail right to the enclosure. No more need for sub-panels if all your components are DIN rail compatible.

- **NEMA Ratings and Underwriters Laboratory Listings**

All Integra enclosures are NEMA 4X. Our Premium and JIC Lines are UL/C-UL-50 Listed for types 2, 3, 3R, 3S, 4X, 12, 13, and Marine Use. With four cover screws, these enclosures are type 6/6P. Integra is listed as Cabinet and Cutout Boxes (E207562) and Junction and Pull Boxes (E229365).

- **Stainless Steel Latching**

Enclosures within the "HL Series" of each line feature stainless steel locking latches that are bolted in place at the factory. This provides a level of security that can not be met with pop rivets or slide-on latches.

- **Modifications**

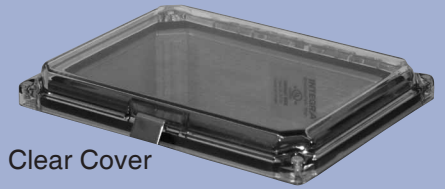
Full modification services are available at Integra, including machining, custom panels and custom colors. Call us to discuss your unique requirements.

- **Integrated Latching & Flange (Impact Line)**

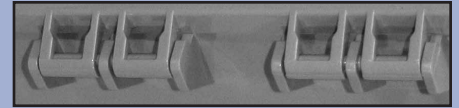
Integrated hinges and mounting feet provide ease of installation and ready to mount out of the box. The symmetrical construction means the enclosure can be flipped right or left for proper door opening.

- **Packaging**

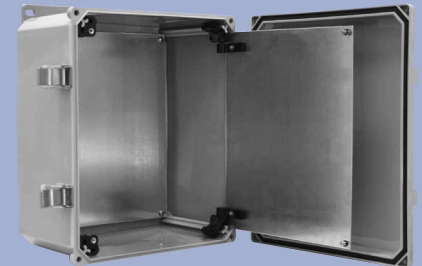
Standard packaging is one unit per carton, packed to ensure safe delivery to your location. Or, if bulk packing or other packaging is needed, call us and we can work to meet your requirements.



Clear Cover



EZ Hinge



Swing Out Panel



DIN Rails



Customization



Panel Suspension

SELECTION GUIDE

Choosing the correct enclosure for your application is critical. Following is an overview of each of the Integra product lines and their characteristics that can guide your selection.



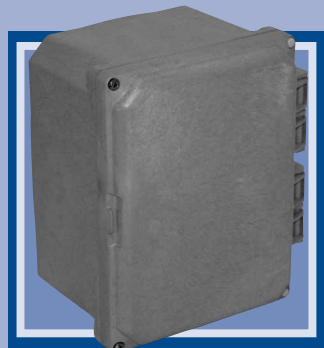
PREMIUM LINE (MOST POPULAR LINE)

The Premium Line from Integra Enclosures is designed for use in any electrical application such as instrumentation and other OEM applications. The Premium Line is UL/C-UL-50 Listed and meets types 2, 3, 3R, 3S, 4, 4X, 5, 6/6P, 12, 13, and Marine Use. It has very high impact resistance of over 900 in/lbs. It is light grey in color with a gloss finish and provides a very high aesthetic look and feel. The thermoplastic polycarbonate material is very easy to machine or punch. Review Engineering Information and Chemical Resistance to check for your specific needs.



IMPACT LINE

The new 100% polycarbonate Impact series was created to provide an all-polycarbonate solution, free of metallic hinges, screws or fasteners. This new customizable design offers a superior degree of corrosion-resistance. It's unibody, molded construction delivers both strength and durability, with an amazing degree of impact resistance. Interior mounting provisions provide flexibility for electronic or electrical components. Integrated hinges and mounting feet provide ease of installation and ready to mount out of the box. The symmetrical construction means the enclosure can be flipped right or left for proper door opening. The Impact Line is UL/C-UL-50 Listed and meets types 2, 3, 3R, 3S, 4, 4X, 5, 6/6P, 12, 13, and Marine Use. Review Engineering Information and Chemical Resistance for your specific needs.



JIC LINE

The JIC Line is also UL/C-UL-50 Listed and meets types 2, 3, 3R, 3S, 4, 4X, 5, 6/6P, 12, and Marine Use. The JIC Line has impact resistance more similar to traditional fiberglass. Using UL-746 test criteria, the JIC Line exhibits impact resistance of over 300 inch/pounds. A typical fiberglass box is about 200 inch/pounds. The JIC Line is dark grey in color with a matte finish, providing a box that hides dirt in an industrial environment and exudes a durable, sturdy look. Like the Premium Line, the JIC Line is easy to machine and punch, eliminating the airborne fibers and rough edges typical with thermoformed enclosures. Review Engineering Information and Chemical Resistance to check for your specific needs. Contact factory for availability.



TELECOM LINE

The Telecom Line is not UL listed, however it has all of the design features and dimensional characteristics common to the Premium and JIC Lines. These enclosures have good impact resistance and are very easy to machine and punch. Available at a slightly lower price point, the Telecom Line offers a high quality, water-proof enclosure with a dramatic semi-gloss black look. Review Engineering Information and Chemical Resistance for your specific needs. Contact factory for availability.