

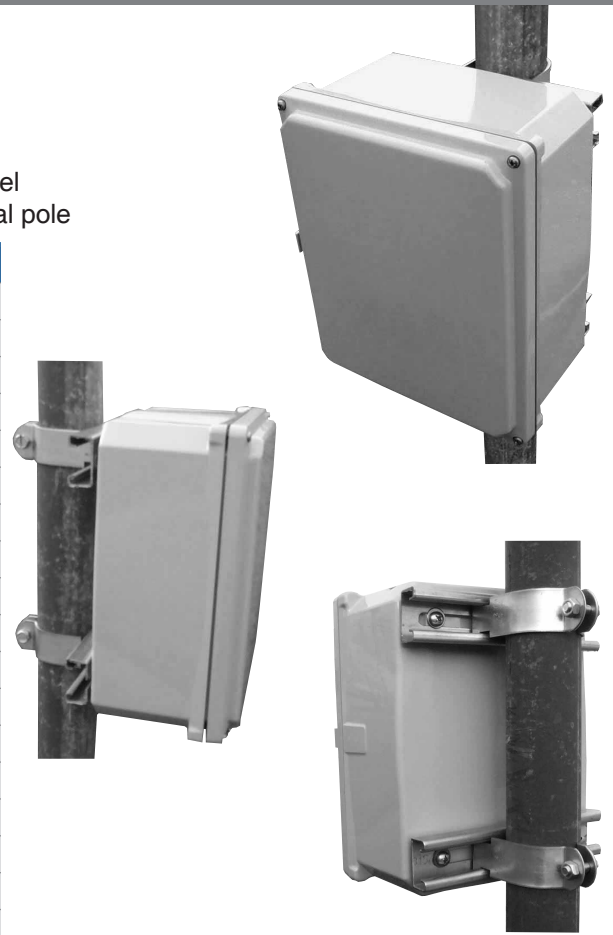


POLE MOUNTING KITS

Features and Benefits

These kits contain all galvanized steel components and zinc-plated steel fasteners, designed to securely fasten your Integra enclosure to a metal pole.

Part Number	Description	Size	UOM	Ctn. Qty.																																						
PMKG-26	For 6" Enclosure - 2" Pole	n/a	1 EA	1																																						
PMKG-28	For 8" Enclosure - 2" Pole	n/a	1 EA	1																																						
PMKG-210	For 10" Enclosure - 2" Pole	n/a	1 EA	1																																						
PMKG-212	For 12" Enclosure - 2" Pole	n/a	1 EA	1																																						
PMKG-214	For 14" Enclosure - 2" Pole	n/a	1 EA	1																																						
PMKG-216	For 16" Enclosure - 2" Pole	n/a	1 EA	1																																						
PMKG-36	For 6" Enclosure - 3" Pole	n/a	1 EA	1																																						
PMKG-38	For 8" Enclosure - 3" Pole	n/a	1 EA	1																																						
PMKG-310	For 10" Enclosure - 3" Pole	n/a	1 EA	1																																						
PMKG-312	For 12" Enclosure - 3" Pole	n/a </tr <tr> <td>PMKG-314</td> <td>For 14" Enclosure - 3" Pole</td> <td>n/a</td> <td>1 EA</td> <td>1</td> </tr> <tr> <td>PMKG-316</td> <td>For 16" Enclosure - 3" Pole</td> <td>n/a</td> <td>1 EA</td> <td>1</td> </tr> <tr> <td>PMKG-46</td> <td>For 6" Enclosure - 4" Pole</td> <td>n/a</td> <td>1 EA</td> <td>1</td> </tr> <tr> <td>PMKG-48</td> <td>For 8" Enclosure - 4" Pole</td> <td>n/a</td> <td>1 EA</td> <td>1</td> </tr> <tr> <td>PMKG-410</td> <td>For 10" Enclosure - 4" Pole</td> <td>n/a</td> <td>1 EA</td> <td>1</td> </tr> <tr> <td>PMKG-412</td> <td>For 12" Enclosure - 4" Pole</td> <td>n/a</td> <td>1 EA</td> <td>1</td> </tr> <tr> <td>PMKG-414</td> <td>For 14" Enclosure - 4" Pole</td> <td>n/a</td> <td>1 EA</td> <td>1</td> </tr> <tr> <td>PMKG-416</td> <td>For 16" Enclosure - 4" Pole</td> <td>n/a</td> <td>1 EA</td> <td>1</td> </tr>	PMKG-314	For 14" Enclosure - 3" Pole	n/a	1 EA	1	PMKG-316	For 16" Enclosure - 3" Pole	n/a	1 EA	1	PMKG-46	For 6" Enclosure - 4" Pole	n/a	1 EA	1	PMKG-48	For 8" Enclosure - 4" Pole	n/a	1 EA	1	PMKG-410	For 10" Enclosure - 4" Pole	n/a	1 EA	1	PMKG-412	For 12" Enclosure - 4" Pole	n/a	1 EA	1	PMKG-414	For 14" Enclosure - 4" Pole	n/a	1 EA	1	PMKG-416	For 16" Enclosure - 4" Pole	n/a	1 EA	1
PMKG-314	For 14" Enclosure - 3" Pole	n/a	1 EA	1																																						
PMKG-316	For 16" Enclosure - 3" Pole	n/a	1 EA	1																																						
PMKG-46	For 6" Enclosure - 4" Pole	n/a	1 EA	1																																						
PMKG-48	For 8" Enclosure - 4" Pole	n/a	1 EA	1																																						
PMKG-410	For 10" Enclosure - 4" Pole	n/a	1 EA	1																																						
PMKG-412	For 12" Enclosure - 4" Pole	n/a	1 EA	1																																						
PMKG-414	For 14" Enclosure - 4" Pole	n/a	1 EA	1																																						
PMKG-416	For 16" Enclosure - 4" Pole	n/a	1 EA	1																																						



CORD GRIPS

Features and Benefits

- IP68/NEMA 4X/6P Rated
- Temp Range -30 C to 100 C
- UL 94 V0 Flame Rated
- Neoprene Sealing Grommet
- Polyamide Construction



Part Number	Description	Hole Dia.	Pkg. Q
CG-LTF7	PC Hub Cord Grip with Lock Nut (.177-.256)	0.500	10
CG-LTF9	PC Hub Cord Grip with Lock Nut (.197-.315)	0.598	10
CG-LTF11	PC Hub Cord Grip with Lock Nut (.217-.394)	0.732	10
CG-LTF13.5	PC Hub Cord Grip with Lock Nut (.236-.472)	0.803	10
CG-LTF16	PC Hub Cord Grip with Lock Nut (.315-.551)	0.886	5
CG-LTF21	PC Hub Cord Grip with Lock Nut (.472-.709)	1.114	5
CG-LTF29	PC Hub Cord Grip with Lock Nut (.669-.984)	1.456	5
CG-NPT3/8	NPT Cord Grip with Lock Nut (.197-.315)	0.688	10
CG-NPT1/2	NPT Cord Grip with Lock Nut (.236-.472)	0.875	10
CG-NPT3/4	NPT Cord Grip with Lock Nut (.433-.709)	1.094	5
CG-NPT1	NPT Cord Grip with Lock Nut (.669-.984)	1.456	5

VALUE ADDED / CAPABILITIES

MODIFICATION CAPABILITIES

At Integra, we are focused on providing you with unique and creative solutions to your product design challenges. You want your products in enclosures that help draw attention to your company and assist in your marketing and sales efforts. We can help design custom panels that, when mounted under our crystal clear covers, will make your products stand out.

We can also do custom colors, and a full range of modification services.

Primary Capabilities

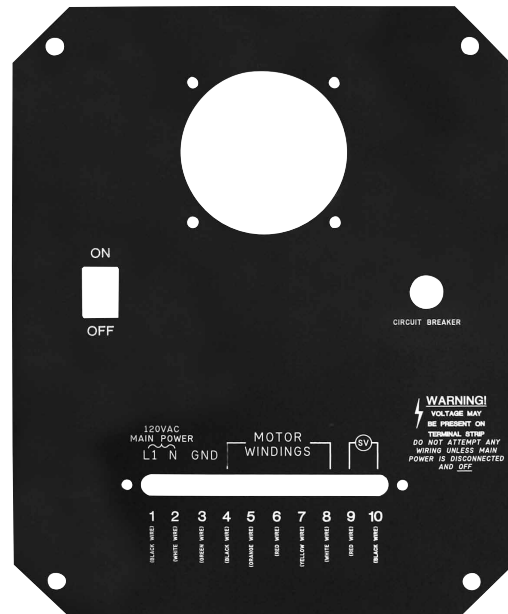
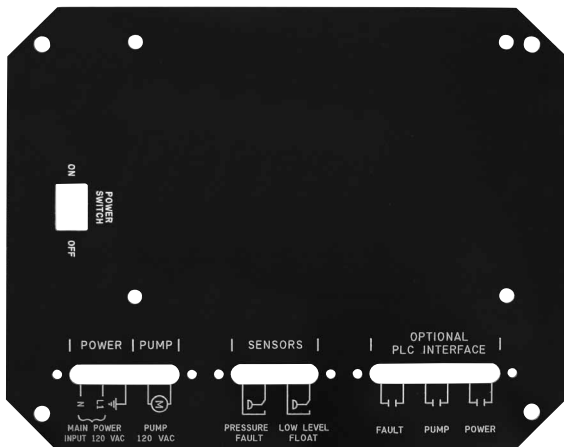
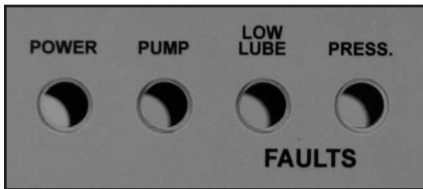
- Push buttons
- Cutouts for LEDs & lights
- Custom back panels
- Screen printing on various surfaces and materials
- Factory installed windows
- Special packaging solutions
- Custom injection molding

Secondary Capabilities

- Installing customer supplied product
- Circuit boards
- Wire / cable
- Cord grips



Contact the
Integra Factory
with specific
requirements





TAKE A CLOSER LOOK AT THE VERSATILITY OF INTEGRA.

Integra window kits can create the ideal solution for a wide range of applications. Available on our Premium enclosure line, it provides a customized viewing area without the need to make holes or cutouts.

By applying a vinyl overlay to the exterior or interior of a clear front viewing door, a “window” can be created, without the need for a hole or cutout, which can reduce the enclosure’s protection level.

A clear viewing door can be silk-screened from the interior or exterior to create a graphical look or identity.

Integrated hinges mean no additional hardware or metal parts, and the door can be easily removed for unimpeded component access.

ACCESSORIES

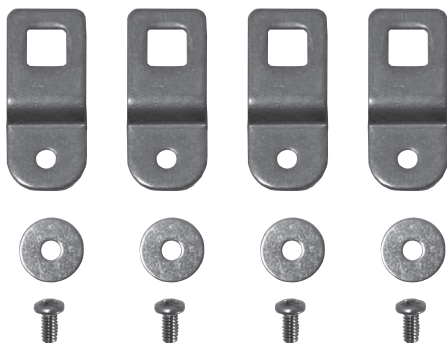
Part Number	Description	Size	Ct. Qty.
Miscellaneous Accessories			
MFKB	Mounting Feet Kit-Telecom Line	n/a	1 EA
MFKG	Mounting Feet Kit-Premium Line	n/a	1 EA
MFKSS	Mounting Feet Kit-Stainless Steel	n/a	1 EA
MFLK6	Mounting Flange Kit 6"	n/a	1 EA
MFLK8	Mounting Flange Kit 8"	n/a	1 EA
MFLK10	Mounting Flange Kit 10"	n/a	1 EA
MFLK12	Mounting Flange Kit 12"	n/a	1 EA
MFKJIC	Mounting Feet Kit-JIC Line	n/a	1 EA
BPAKB	Back Panel Adjustment Kit-Black	n/a	1 EA
BPAKG	Back Panel Adjustment Kit-Grey	n/a	1 EA
BPAK-JIC	Back Panel Adjustment Kit - JIC Line	n/a	1 EA
SSLL-KIT	Stainless Steel Locking Latch Kit	n/a	1 EA
SSL-KIT	Stainless Steel Latch w/o Lockout Kit	n/a	1 EA
DIN6	DIN Rail Kit 6" (2 rails, 4 screws)	n/a	1 EA
DIN8	DIN Rail Kit 8" (2 rails, 4 screws)	n/a	1 EA
DIN10	DIN Rail Kit 10" (2 rails, 2 screws)	n/a	1 EA
DIN12	DIN Rail Kit 12" (2 rails, 4 screws)	n/a	1 EA
DIN14	DIN Rail Kit 14" (2 rails, 4 screws)	n/a	1 EA
DIN16	DIN Rail Kit 16" (2 rails, 4 screws)	n/a	1 EA
SP10	Screw Pack (for mounting to bosses, 10)	n/a	1 EA
Aluminum Panels for Component Installation - Bare Aluminum			
ABP66	Aluminum Panel for 6"x6" enclosure	4.88"x4.88"	1 EA
ABP86	Aluminum Panel for 8"x6" enclosure	6.75"x4.88"	1 EA
ABP88	Aluminum Panel for 8"x8" enclosure	6.75"x6.75"	1 EA
ABP108	Aluminum Panel for 10"x8" enclosure	8.75"x6.88"	1 EA
ABP1210	Aluminum Panel for 12"x10" enclosure	10.75"x8.88"	1 EA
ABP1412	Aluminum Panel for 14"x12" enclosure	12.75"x10.88"	1 EA
ABP1614	Aluminum Panel for 16"x14" enclosure	14.75"x12.88"	1 EA
ABP1816	Aluminum Panel for 18"x16" enclosure	16.75"x14.88"	1 EA
Steel Panels for Component Installation - White Paint Coating			
SBP66	Steel Panel for 6"x6" enclosure	4.88"x4.88"	1 EA
SBP86	Steel Panel for 8"x6" enclosure	6.75"x4.88"	1 EA
SBP88	Steel Panel for 8"x8" enclosure	6.75"x6.75"	1 EA
SBP108	Steel Panel for 10"x8" enclosure	8.75"x6.88"	1 EA
SBP1210	Steel Panel for 12"x10" enclosure	10.75"x8.88"	1 EA
SBP1412	Steel Panel for 14"x12" enclosure	12.75"x10.88"	1 EA
SBP1614	Steel Panel for 16"x14" enclosure	14.75"x12.88"	1 EA
SBP1816	Steel Panel for 18"x16" enclosure	16.75"x14.88"	1 EA
Clear Replacement Covers - Includes Gasket, Cover Screws, and Hole Plugs			
X66CSC-RPL	Clear Replacement Screw Cover w/gasket	6"x6"	1 EA
X66CHC-RPL	Clear Replacement Hinge Cover w/gasket	6"x6"	1 EA
X86CSC-RPL	Clear Replacement Screw Cover w/gasket	8"x6"	1 EA
X86CHC-RPL	Clear Replacement Hinge Cover w/gasket	8"x6"	1 EA
X88CSC-RPL	Clear Replacement Screw Cover w/gasket	8"x8"	1 EA



ACCESSORIES (CONT.)

Part Number	Description	Size	Ct. Qty.
Clear Replacement Covers - Includes Gasket, Cover Screws, and Hole Plugs			
X88CHC-RPL	Clear Replacement Hinge Cover w/gasket	8"x8"	1 EA
X1008CSC-RPL	Clear Replacement Screw Cover w/gasket	10"x8"	1 EA
X1008CHC-RPL	Clear Replacement Hinge Cover w/gasket	10"x8"	1 EA
X1210CSC-RPL	Clear Replacement Screw Cover w/gasket	12"x10"	1 EA
X1210CHC-RPL	Clear Replacement Hinge Cover w/gasket	12"x10"	1 EA
X1412CSC-RPL	Clear Replacement Screw Cover w/gasket	14"x12"	1 EA
X1412CHC-RPL	Clear Replacement Hinge Cover w/gasket	14"x12"	1 EA
X1614CSC-RPL	Clear Replacement Screw Cover w/gasket	16"x14"	1 EA
X1614CHC-RPL	Clear Replacement Hinge Cover w/gasket	16"x14"	1 EA
X1816CHC-RPL	Clear Replacement Hinge Cover w/gasket	18"x16"	1 EA

Premium Line Replacement Covers - Includes Gasket, Screws, and Hole Plugs			
H66CSO-RPL	Replacement Screw Cover w/gasket	6"x6"	1 EA
H66CHO-RPL	Replacement Hinge Cover w/gasket	6"x6"	1 EA
H86CSO-RPL	Replacement Screw Cover w/gasket	8"x6"	1 EA
H86CHO-RPL	Replacement Hinge Cover w/gasket	8"x6"	1 EA
H88CSO-RPL	Replacement Screw Cover w/gasket	8"x8"	1 EA
H88CHO-RPL	Replacement Hinge Cover w/gasket	8"x8"	1 EA
H1008CSO-RPL	Replacement Screw Cover w/gasket	10"x8"	1 EA
H1008CHO-RPL	Replacement Hinge Cover w/gasket	10"x8"	1 EA
H1210CSO-RPL	Replacement Screw Cover w/gasket	12"x10"	1 EA
H1210CHO-RPL	Replacement Hinge Cover w/gasket	12"x10"	1 EA
H1412CSO-RPL	Replacement Screw Cover w/gasket	14"x12"	1 EA
H1412CHO-RPL	Replacement Hinge Cover w/gasket	14"x12"	1 EA
H1614CSO-RPL	Replacement Screw Cover w/gasket	16"x14"	1 EA
H1614CHO-RPL	Replacement Hinge Cover w/gasket	16"x14"	1 EA
H1816CSO-RPL	Replacement Screw Cover w/gasket	18"x16"	1 EA
H1816CHO-RPL	Replacement Hinge Cover w/gasket	18"x16"	1 EA



Stainless Steel Mounting Feet (MFKSS)



DIN Rail Kit 8" (DIN8)

SWING PANEL KIT PRODUCTS

Part Number	Description	UOM	Ct. Qty.											
Swing Panel Kit Hardware Only														
This kit includes the two swing arm assemblies, two closure pads, and all hardware needed to assemble the system into any Integra Enclosure.														
SOPK	Swing Panel Kit	n/a	1 EA											
Aluminum Subpanels Pre-Drilled For SOPK														
ABP-66SP	Panel for 6x6 Swing Kit	n/a	1 EA											
ABP-86SP	Panel for 8x6 Swing Kit	n/a	1 EA											
ABP-88SP	Panel for 8x8 Swing Kit	n/a	1 EA											
ABP-108SP	Panel for 10x8 Swing Kit	n/a	1 EA											
ABP-1210SP	Panel for 12x10 Swing Kit	n/a	1 EA											
ABP-1412SP	Panel for 14x12 Swing Kit	n/a	1 EA											
ABP-1614SP	Panel for 16x14 Swing Kit	n/a	1 EA											
ABP-1816SP	Panel for 18x16 Swing Kit	n/a	1 EA											
Complete Kits Including One Panel and All Hardware Needed to Install Swing Door														
ABP-66SP/SOPK	Swing Panel Kit for 6x6	n/a	1 EA											
ABP-86SP/SOPK	Swing Panel Kit for 8x6	n/a	1 EA											
ABP-88SP/SOPK	Swing Panel Kit for 8x8	n/a	1 EA											
ABP-108SP/SOPK	Swing Panel Kit for 10x8	n/a	1 EA											
ABP-1210SP/SOPK	Swing Panel Kit for 12x10	n/a </tr <tr> <td>ABP-1412SP/SOPK</td> <td>Swing Panel Kit for 14x12</td> <td>n/a</td> <td>1 EA</td> </tr> <tr> <td>ABP-1614SP/SOPK</td> <td>Swing Panel Kit for 16x14</td> <td>n/a</td> <td>1 EA</td> </tr> <tr> <td>ABP-1816SP/SOPK</td> <td>Swing Panel Kit for 18x16</td> <td>n/a</td> <td>1 EA</td> </tr>	ABP-1412SP/SOPK	Swing Panel Kit for 14x12	n/a	1 EA	ABP-1614SP/SOPK	Swing Panel Kit for 16x14	n/a	1 EA	ABP-1816SP/SOPK	Swing Panel Kit for 18x16	n/a	1 EA
ABP-1412SP/SOPK	Swing Panel Kit for 14x12	n/a	1 EA											
ABP-1614SP/SOPK	Swing Panel Kit for 16x14	n/a	1 EA											
ABP-1816SP/SOPK	Swing Panel Kit for 18x16	n/a	1 EA											

SOPK

